

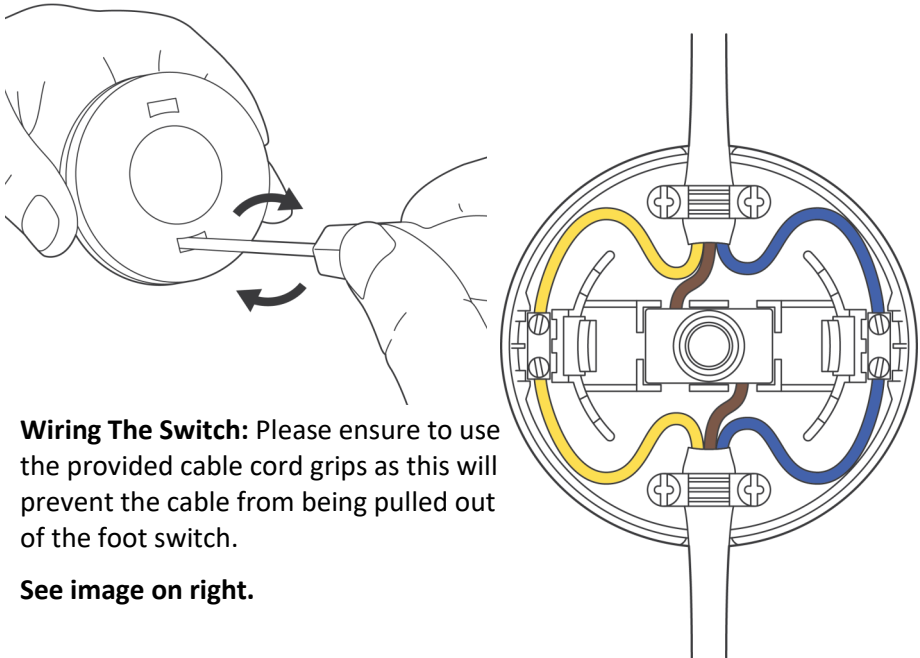
## Foot Switch Wiring

Ref:  
ISFS1

Before you start please ensure you are competent to carry out electrical works and ensure the electricity is turned off.

If in any doubt stop what you're doing and seek professional advice.

**Unlocking The Switch:** Insert a slotted screwdriver into the hole at the rear of the foot switch and twist the screwdriver, this will release the catch inside. Repeat the above for both sides. **See Image Below.**



**Wiring The Switch:** Please ensure to use the provided cable cord grips as this will prevent the cable from being pulled out of the foot switch.

**See image on right.**

If you have any concerns or difficulties in connecting this product please contact us on details at the bottom of this guide.

All electrical parts confirm to BS61058-1, BS61058-2 and have full CE approval, please email for copies.



Unit 3 Brookside Business Park | Brookside Avenue | Rustington | West Sussex | BN16 3LP

E: support@lampspares.co.uk | T: 01903 776644 | KB: support.lampspares.co.uk

© Lampspares. All Rights Reserved